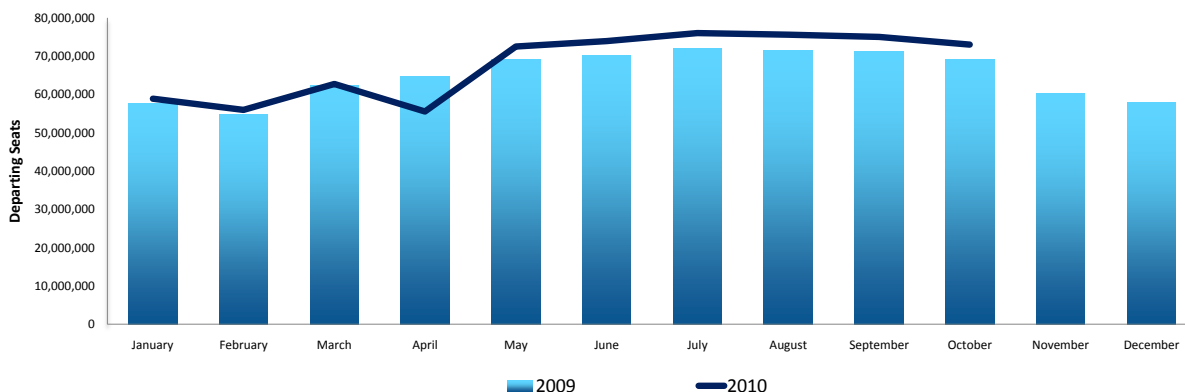


Intra European **Capacity Report**

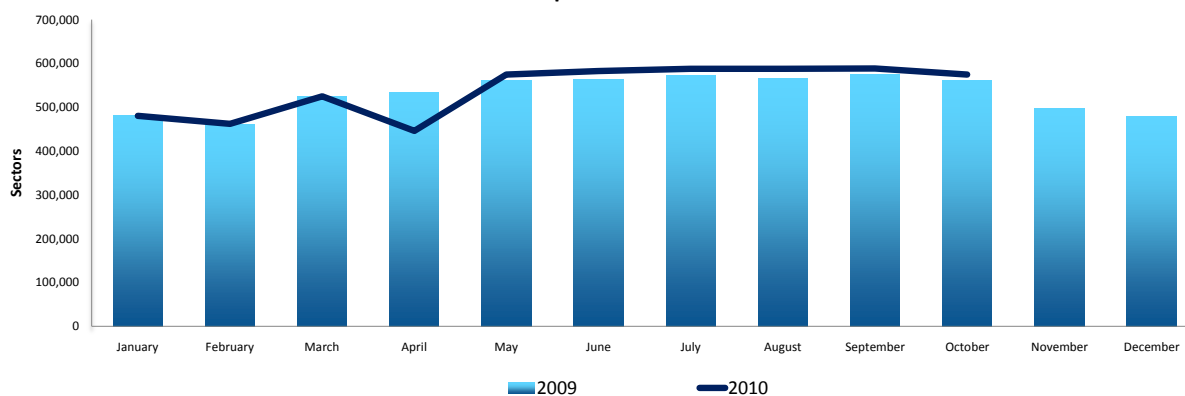
OCTOBER 2010

Capacity and Frequency Analysis
for Intra European Operations

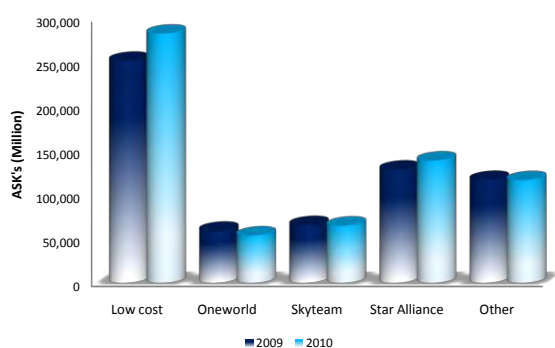
Intra-European Seat Capacity



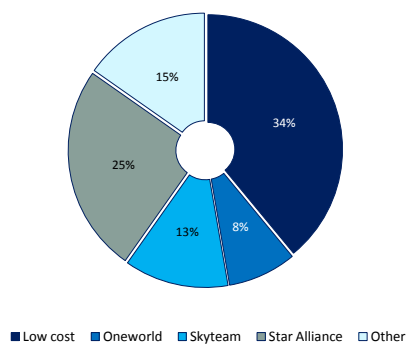
Intra-European Sectors Flown



ASKs by Airline Grouping - YTD



Intra-European Seats by Airline Grouping



Report Highlights

20 of the top 25 airports delivered growth in intra-European capacity in October 2010 versus 2009.

19 of the top 25 airlines experienced growth in intra-European capacity in October 2010 versus 2009.

28 of the top 50 intra-European route pairs saw an increase in capacity in October 2010 versus 2009. Only 23 have recorded growth in seat capacity in the year-to-date versus 2009.

The United Kingdom and Ireland are the only two countries in the top 20 with a year on year decline in intra-European seat capacity.

Low Cost operations have produced 10% more intra-European Available Seat Kilometres (ASK's) in 2010 than the three major alliances combined.

Top 25 Airports by Departing Seat Capacity		October 2010		% of Europe	October 2009		October 2008	
MAD	Madrid	2,229,352	↓	3.1%	2,351,285	↓	2,502,425	↓
FRA	Frankfurt	1,999,146	↑	2.7%	1,902,820	↓	2,047,375	↑
LHR	London - Heathrow	1,945,033	↑	2.7%	1,826,338	↓	1,945,879	↓
MUC	Munich	1,880,805	↑	2.6%	1,787,238	↓	1,864,378	↑
CDG	Paris - Charles De Gaulle	1,868,712	↑	2.6%	1,829,485	↓	2,128,808	↑
FCO	Rome - Fiumicino	1,853,920	↑	2.5%	1,756,766	↓	1,834,223	↑
BCN	Barcelona	1,721,656	↑	2.4%	1,475,960	↓	1,789,386	↓
AMS	Amsterdam	1,692,177	↑	2.3%	1,547,443	↓	1,790,303	↓
LGW	London - Gatwick	1,414,535	↓	1.9%	1,437,650	↑	1,231,164	↓
IST	Istanbul - Ataturk	1,304,343	↓	1.8%	1,304,962	↑	1,189,076	↑
OSL	Oslo	1,249,151	↑	1.7%	1,172,165	↓	1,281,842	↑
PMI	Palma Mallorca	1,227,745	↑	1.7%	1,226,795	↑	1,197,966	↓
CPH	Copenhagen	1,198,056	↑	1.6%	1,055,624	↑	1,215,006	↑
DUS	Dusseldorf	1,111,344	↑	1.5%	987,822	↓	1,021,804	↓
VIE	Vienna	1,083,833	↑	1.5%	931,630	↓	1,049,589	↑
STN	London - Stansted	1,047,765	↓	1.4%	1,128,504	↓	1,275,786	↓
ZRH	Zurich	1,020,190	↑	1.4%	987,112	↓	1,074,865	↑
ORY	Paris - Orly	1,008,713	↑	1.4%	962,270	↓	1,118,340	↓
DUB	Dublin	991,611	↓	1.4%	997,474	↓	1,215,489	↑
ARN	Stockholm - Arlanda	986,573	↑	1.4%	892,970	↓	1,085,064	↑
TXL	Berlin - Tegel	919,794	↑	1.3%	856,650	↓	871,882	↑
ATH	Athens	868,410	↑	1.2%	852,523	↓	904,748	↓
MLX	Milan - Malpensa	865,018	↑	1.2%	788,787	↓	847,724	↓
BRU	Brussels	822,309	↑	1.1%	791,829	↓	913,919	↑
HAM	Hamburg	795,511	↑	1.1%	747,838	↓	769,449	↓




Top 25 Airlines by Departing Seat Capacity		October 2010		% of Europe	October 2009		October 2008	
FR	Ryanair	8,178,408	↑	11.2%	7,109,613	↑	6,568,506	↑
LH	Lufthansa	6,128,218	↑	8.4%	5,788,855	↓	5,929,408	↑
U2	easyJet	4,564,815	↑	6.3%	4,325,604	↑	4,195,771	↑
AF	Air France	3,881,472	↓	5.3%	4,011,919	↓	4,727,694	↑
AB	airberlin	3,425,752	↑	4.7%	2,825,858	↓	2,946,560	↑
SK	SAS	2,968,864	↑	4.1%	2,881,881	↓	3,673,942	↓
TK	Turkish Airlines	2,723,467	↑	3.7%	2,435,919	↑	2,263,180	↑
BA	British Airways	2,472,062	↑	3.4%	2,380,487	↓	2,675,785	↓
IB	Iberia	2,316,668	↓	3.2%	2,615,571	↓	3,144,671	↓
AZ	Alitalia	2,171,994	↑	3.0%	1,715,769	↓	2,020,466	↓
DY	Norwegian	1,763,760	↑	2.4%	1,413,230	↑	1,109,180	↑
KL	KLM	1,656,345	↑	2.3%	1,529,258	↑	1,787,703	↑
VY	Vueling Airlines	1,336,320	↑	1.8%	994,686	↑	628,648	↓
LX	SWISS	1,258,694	↑	1.7%	1,255,697	↓	1,321,825	↑
EI	Aer Lingus	1,150,608	↑	1.6%	1,068,258	↓	1,079,900	↑
BE	FlyBE	1,125,995	↓	1.5%	1,154,218	↑	1,043,698	↓
OS	Austrian	1,124,828	↑	1.5%	972,071	↓	1,023,614	↓
4U	Germanwings	1,002,110	↑	1.4%	792,960	↓	846,864	↓
TP	TAP-Portugal	935,257	↑	1.3%	857,681	↓	957,289	↑
W6	Wizzair	930,060	↑	1.3%	818,640	↑	583,920	↑
PC	Pegasus	875,312	↑	1.2%	0		0	
AY	Finnair	818,962	↑	1.1%	763,956	↓	842,338	↓
JK	Spanair	816,684	↓	1.1%	939,598	↓	1,073,998	↓
TOM	Thomson Airways	815,886	↓	1.1%	927,314	↑	412,518	↓
UX	Air Europa Lineas Aereas	777,740	↓	1.1%	809,631	↓	968,497	↓

Intra-European Market Analysis by Country

	October 2010		October 2009		YTD 2010		YTD 2009					
	Seats	Sectors	Seats	Sectors	Seats	Sectors	Seats	Sectors				
United Kingdom	7,153,817	↓	47,599	↑	7,156,653	47,545	66,550,526	↓	444,914	↓	68,029,012	457,418
Germany	6,805,583	↑	51,200	↑	6,268,499	49,752	60,370,327	↑	463,371	↓	57,938,470	465,138
Spain and Canary Islands	5,608,242	↑	34,167	↑	5,200,142	32,130	50,079,219	↑	309,865	↑	47,436,685	298,597
Italy	4,045,625	↑	28,068	↑	3,476,476	25,047	36,867,359	↑	259,042	↑	33,885,654	245,566
France	3,285,833	↑	27,453	↑	3,078,075	25,906	30,649,746	↓	259,811	↑	30,931,285	259,080
Netherlands	1,891,953	↑	14,561	↑	1,699,140	14,165	17,484,285	↑	135,933	↓	16,717,584	136,751
Switzerland	1,774,768	↑	14,549	↑	1,677,600	13,905	16,935,941	↑	139,294	↑	16,548,677	137,000
Turkey	1,699,973	↑	9,817	↑	1,422,551	8,431	14,202,410	↑	84,728	↑	12,123,549	72,011
Ireland	1,196,476	↓	7,554	↑	1,239,988	7,512	11,513,977	↓	72,086	↓	12,836,676	77,993
Denmark	1,184,551	↑	9,860	↑	1,048,704	9,290	10,754,189	↑	90,414	↑	9,692,178	85,851
Austria	1,180,258	↑	10,343	↑	1,027,354	9,980	11,471,118	↑	101,092	↑	10,555,465	100,560
Portugal	1,156,048	↑	7,911	↑	1,049,155	7,153	10,466,472	↑	72,446	↑	9,860,985	68,745
Belgium	1,125,090	↑	8,984	↑	1,022,072	8,782	10,325,287	↑	82,831	↓	9,749,445	82,949
Sweden	1,117,850	↑	8,668	↑	992,393	7,945	9,799,671	↑	76,690	↑	9,046,547	72,970
Greece	1,050,643	↑	6,493	↑	1,040,600	6,493	9,996,861	↑	62,252	↑	9,673,662	61,257
Norway	995,782	↑	7,324	↑	895,551	7,069	9,165,653	↑	68,311	↑	7,907,024	64,587
Poland	896,923	↑	7,428	↑	806,248	7,007	8,624,821	↑	71,085	↑	7,914,623	68,688
Finland	637,315	↑	5,243	↑	574,370	4,884	5,560,839	↑	46,600	↑	5,309,633	44,797
Romania	549,861	↑	4,432	↓	470,872	4,056	5,107,494	↑	42,017	↑	4,767,992	40,737
Czech Republic	545,761	↑	5,099	↓	520,284	5,101	5,211,344	↓	48,938	↓	5,376,324	51,923
Hungary	463,377	↑	3,881	↓	450,057	3,966	4,303,898	↓	36,376	↓	4,390,251	39,801
Cyprus	443,665	↓	2,587	↓	461,918	2,715	4,131,366	↑	24,542	↑	4,078,168	23,693
Ukraine	282,692	↑	2,550	↑	255,391	2,187	2,679,760	↑	23,447	↑	2,587,760	21,707
Latvia	257,701	↑	2,374	↑	252,688	2,276	2,600,529	↑	23,906	↑	2,345,773	21,062
Croatia	235,531	↑	1,951	↑	211,054	1,777	2,359,460	↑	19,342	↑	2,125,062	17,678

Domestic Market Analysis by Country

	October 2010		October 2009		YTD 2010		YTD 2009					
	Seats	Sectors	Seats	Sectors	Seats	Sectors	Seats	Sectors				
Spain and Canary Islands	4,648,938	↓	37,281	↓	4,665,997	37,777	44,989,104	↓	362,360	↓	46,781,296	382,629
Italy	4,067,760	↓	27,076	↓	4,108,518	28,154	40,599,654	↑	269,343	↑	38,849,498	263,099
Germany	3,360,281	↑	25,830	↓	3,267,118	26,491	31,573,103	↑	242,444	↓	30,644,021	247,910
United Kingdom	2,952,641	↓	32,442	↓	3,045,351	34,272	28,433,239	↓	318,853	↓	29,497,094	329,369
France	2,523,780	↓	24,481	↓	2,527,242	24,642	23,907,198	↓	230,796	↓	24,753,099	238,295
Norway	2,234,027	↑	23,972	↑	2,102,615	23,532	19,260,369	↑	212,531	↓	18,028,915	217,015
Turkey	2,056,142	↑	12,677	↑	1,822,152	11,461	19,462,682	↑	123,619	↑	18,862,175	116,427
Greece	883,466	↓	8,559	↓	890,895	8,613	9,368,509	↓	91,218	↑	9,728,746	95,765
Sweden	852,632	↓	10,035	↓	885,359	11,310	7,464,129	↓	95,093	↓	7,529,404	97,970
Portugal	430,375	↑	3,911	↑	393,364	3,745	4,391,710	↑	39,801	↑	4,239,899	39,243
Finland	417,318	↓	4,937	↓	417,600	5,469	3,817,730	↓	46,801	↓	4,008,647	49,845
Denmark	294,083	↑	3,525	↑	256,922	3,143	2,762,660	↑	32,698	↑	2,254,396	27,807
Romania	175,932	↑	1,861	↑	110,269	1,684	1,541,587	↑	17,228	↑	1,085,016	16,421
Poland	138,074	↑	2,119	↓	124,272	2,415	1,220,455	↑	20,685	↓	1,187,298	22,165
Ukraine	130,140	↓	1,786	↓	205,154	2,159	1,457,178	↓	18,428	↓	2,120,088	21,621
Austria	120,042	↑	1,747	↑	109,015	1,695	1,111,537	↑	16,193	↓	1,070,965	16,207
Ireland	111,950	↓	1,044	↓	132,900	1,185	1,132,940	↓	10,524	↓	1,432,240	11,948
Switzerland	90,070	↓	1,005	↓	95,560	1,018	899,928	↓	9,689	↓	940,880	9,847
Croatia	74,788	↓	734	↑	81,188	701	712,571	↓	6,773	↓	910,599	7,338
Czech Republic	16,972	↓	441	↓	19,968	501	155,947	↓	3,795	↓	208,822	5,073
Cyprus	13,014	↓	81	↓	16,396	105	108,156	↓	691	↓	130,644	823
Netherlands	1,807	↑	13	↑	1,285	9	17,801	↑	122	↑	12,242	82
Belgium	760	↓	5	↓	879	6	8,988	↓	52	↓	9,355	63

		2010 YTD			2009 YTD		
Growth	Airline	Seats	Sectors	Aircraft Size	Seats	Sectors	Aircraft Size
Low Cost							
↑	Ryanair	72,648,576	384,384	189	65,431,611	346,199	189
↑	easyJet	42,710,086	274,724	155	40,515,901	259,945	156
↑	airberlin	31,409,986	192,770	163	26,736,544	163,167	164
↑	Norwegian	15,132,704	92,375	164	11,738,565	76,216	154
↑	Vueling Airlines	12,555,864	72,476	173	7,150,242	46,121	155
↓	Aer Lingus	10,855,724	64,811	167	10,892,977	60,051	181
↑	FlyBE	10,778,667	142,212	76	10,328,566	133,213	78
↑	Wizzair	9,115,008	51,240	178	7,286,940	40,483	180
↑	Germanwings	8,758,458	58,527	150	7,188,914	51,034	141
↑	Thomson Airways	6,457,788	36,921	175	5,986,439	35,944	167
Star Alliance							
							
Growth	Airline	Seats	Sectors	Aircraft Size	Seats	Sectors	Aircraft Size
↑	Lufthansa	55,840,962	472,173	118	53,779,456	485,128	111
↑	SAS	26,069,079	205,975	127	25,707,116	218,867	117
↑	Turkish Airlines	25,366,010	160,423	158	22,917,915	139,050	165
↑	SWISS	12,064,269	103,936	116	11,865,358	101,438	117
↑	Austrian	10,417,435	105,994	98	9,206,061	106,903	86
↓	TAP-Portugal	9,034,102	74,762	121	9,086,282	75,090	121
↓	Spanair	8,103,521	52,419	155	8,842,650	59,798	148
↑	Brussels Airlines	6,206,990	59,842	104	0	0	0
↑	LOT - Polish Airlines	4,607,724	63,085	73	4,110,294	61,820	66
↓	bmi	4,008,729	42,862	94	5,007,400	54,482	92
OneWorld							
							
Growth	Airline	Seats	Sectors	Aircraft Size	Seats	Sectors	Aircraft Size
↓	British Airways	23,536,720	165,462	142	24,799,320	173,461	143
↓	Iberia	22,990,857	217,738	106	26,475,952	244,040	108
↓	Finnair	7,177,700	61,552	117	7,477,234	64,228	116
↓	Malev Hungarian Airlines	3,602,785	33,934	106	3,855,797	41,714	92
Skyteam							
							
Growth	Airline	Seats	Sectors	Aircraft Size	Seats	Sectors	Aircraft Size
↓	Air France	36,912,522	359,123	103	39,777,411	382,891	104
↑	Alitalia	20,101,357	137,222	146	16,863,820	115,700	146
↓	KLM	15,315,341	131,421	117	15,616,278	139,548	112
↓	Air Europa Lineas Aereas	7,578,607	46,450	163	8,500,959	47,960	177
↓	CSA	4,500,411	53,204	85	4,632,533	58,821	79
Other							
Growth	Airline	Seats	Sectors	Aircraft Size	Seats	Sectors	Aircraft Size
↓	Aegean Airlines	7,369,746	47,842	154	7,573,297	49,273	154
↑	Meridiana	7,287,424	48,387	151	6,397,455	46,774	137
↓	Olympic Airlines	6,142,671	60,434	102	6,810,350	69,160	98
↑	Thomas Cook Airlines	5,869,655	26,719	220	4,896,985	22,295	220
↓	Wideroe	4,717,338	107,700	44	4,807,295	108,291	44
↓	Air One	4,496,662	33,696	133	8,775,228	60,397	145
↑	Air Baltic	4,188,690	42,770	98	3,462,820	34,820	99
↑	Condor Flugdienst	4,076,478	18,940	215	4,076,402	19,172	213
↓	Monarch Airlines	4,021,284	18,773	214	4,247,268	19,748	215
↑	Binter Canarias	3,262,680	45,315	72	3,188,144	45,169	71

Top 50 Intra European Route-Pairs

	October 2010			YTD 2010			October 2009			YTD 2009								
	Seats	Sectors	Ave AC Size	Seats	Sectors	Ave AC Size	Seats	Sectors	Ave AC Size	Seats	Sectors	Ave AC Size						
Madrid to Barcelona	442,491	↓	2,838	↓	155.9	↓	4,118,711	↓	26,701	↓	154	↑	526,746	3,335	157.9	4,589,040	30,029	153
Rome - Fiumicino to Catania	252,838	↑	1,326	↑	190.7	↑	2,429,336	↑	13,234	↑	184	↑	217,978	1,289	169.1	2,285,234	13,051	175
Paris - Orly to Toulouse	249,695	↑	1,706	↓	146.4	↓	2,301,396	↓	15,713	↓	146	↑	247,817	1,713	144.7	2,360,712	16,275	145
Rome - Fiumicino to Milan - Linate	245,986	↓	1,567	↓	157.0	↑	2,336,648	↓	14,960	↓	156	↑	308,472	2,004	153.9	3,003,065	19,146	157
Paris - Orly to Nice	223,240	↑	1,464	↑	152.5	↓	2,051,974	↓	13,479	↓	152	↑	218,602	1,456	150.1	2,101,991	13,836	152
Oslo to Trondheim	220,786	↑	1,440	↑	153.3	↑	1,798,259	↓	11,743	↓	153	↑	211,219	1,399	151.0	1,672,437	12,228	137
Rome - Fiumicino to Palermo	219,573	↑	1,232	↑	178.2	↑	2,139,768	↑	12,498	↓	171	↑	201,423	1,260	159.9	2,087,727	12,973	161
Munich to Dusseldorf	215,838	↑	1,303	↑	165.6	↑	1,922,976	↑	11,808	↓	163	↑	203,710	1,272	160.1	1,913,250	12,002	159
Barcelona to Palma Mallorca	213,642	↑	1,321	↑	161.7	↑	1,829,963	↓	11,681	↓	157	↓	187,649	1,217	154.2	1,861,847	11,765	158
Oslo to Bergen	212,382	↓	1,450	↑	146.5	↓	1,787,518	↓	12,034	↓	149	↑	217,801	1,431	152.2	1,678,675	12,222	137
Istanbul - Ataturk to Izmir	212,828	↓	1,260	↓	168.9	↓	2,067,165	↓	12,337	↓	168	↓	231,033	1,354	170.6	2,164,618	12,874	168
Munich to Hamburg	204,668	↓	1,235	↓	165.7	↓	1,901,664	↓	11,328	↓	168	↑	207,874	1,246	166.8	1,911,350	11,607	165
Munich to Berlin - Tegel	204,332	↑	1,235	↑	165.5	↑	1,873,920	↑	11,207	↓	167	↓	195,779	1,210	161.8	1,800,494	11,280	160
Frankfurt to Berlin - Tegel	197,839	↓	1,136	↑	174.2	↑	1,937,297	↑	10,767	↑	180	↓	199,836	1,072	186.4	1,846,400	9,379	197
Frankfurt to Hamburg	189,279	↓	1,108	↑	170.8	↑	1,826,930	↑	10,469	↑	175	↓	157,580	839	187.8	1,439,423	7,324	197
Oslo to Stavanger	188,766	↓	1,294	↓	145.9	↓	1,560,072	↓	10,571	↓	148	↑	189,577	1,269	149.4	1,480,048	10,944	135
London - Heathrow to Dublin	187,228	↑	1,034	↓	181.1	↑	1,782,533	↓	10,074	↓	177	↓	185,002	1,038	178.2	1,871,621	10,419	180
Madrid to Palma Mallorca	186,078	↓	1,121	↑	166.0	↑	1,898,133	↓	11,289	↓	168	↓	208,839	1,215	171.9	2,130,317	12,376	172
Copenhagen to Stockholm - Arlanda	174,949	↑	1,209	↑	170.0	↑	1,385,301	↑	8,252	↑	168	↑	139,006	848	163.9	1,200,660	8,039	149
Munich to Cologne	167,218	↑	1,173	↑	142.6	↑	1,508,958	↓	10,514	↓	144	↑	164,356	1,161	141.6	1,522,263	10,817	141
London - Heathrow to Edinburgh	164,913	↑	1,063	↑	155.1	↑	1,482,772	↑	9,592	↓	155	↑	136,876	952	143.8	1,436,982	9,933	145
Istanbul - Ataturk to Ankara	162,518	↓	948	↓	171.4	↑	1,664,600	↓	9,853	↓	169	↓	178,351	1,027	173.7	1,728,898	10,131	171
Frankfurt to London - Heathrow	157,159	↓	964	↑	163.0	↓	1,512,880	↓	9,313	↓	162	↑	157,384	946	166.4	1,527,988	9,423	162
Istanbul - Ataturk to Antalya	154,080	↓	924	↑	166.8	↑	1,393,238	↓	8,168	↓	171	↓	158,431	879	180.2	1,518,067	8,565	177
London - Heathrow to Paris - Charles De Gaulle	153,261	↑	962	↓	159.3	↑	1,552,024	↑	9,868	↑	157	↑	151,226	975	155.1	1,536,400	9,837	156
London - Heathrow to Amsterdam	152,342	↑	1,038	↓	146.8	↑	1,516,686	↓	10,336	↓	147	↑	152,112	1,123	135.5	1,652,490	11,967	138
Oslo to Stockholm - Arlanda	150,340	↑	985	↓	152.6	↑	1,236,728	↓	8,110	↓	152	↑	147,088	1,007	146.1	1,162,938	8,375	139
Madrid to Las Palmas	148,850	↓	812	↓	183.3	↑	1,588,915	↓	8,705	↓	183	↓	162,230	904	179.5	1,591,028	8,783	181
Athens to Thessaloniki	148,843	↓	980	↓	151.9	↑	1,610,274	↓	11,249	↓	143	↓	164,666	1,189	138.5	1,816,423	12,462	146
Madrid to Rome - Fiumicino	145,829	↑	842	↓	173.2	↑	1,351,920	↑	7,935	↓	170	↑	118,833	693	171.5	1,163,482	6,960	167
Oslo to Copenhagen	145,596	↑	908	↓	160.3	↑	1,337,048	↑	8,404	↓	159	↑	137,797	944	146.0	1,262,243	9,116	138
Stockholm - Arlanda to Helsinki	143,100	↑	1,156	↑	123.8	↑	1,099,619	↑	8,981	↑	122	↑	112,723	979	115.1	962,701	8,273	116
Berlin - Tegel to Cologne	142,922	↓	905	↓	157.9	↑	1,308,572	↓	8,310	↓	157	↓	152,790	1,000	152.8	1,434,601	9,644	149
Madrid to Lisbon	141,040	↓	1,063	↓	132.7	↓	1,377,455	↓	10,413	↓	132	↓	157,640	1,132	139.3	1,347,075	9,231	146
Paris - Charles De Gaulle to Rome - Fiumicino	132,870	↑	762	↓	174.4	↑	1,326,582	↓	7,567	↓	175	↑	147,750	854	173.0	1,661,550	9,638	172
Frankfurt to Paris - Charles De Gaulle	131,880	↑	992	↓	132.9	↑	1,238,378	↓	9,417	↓	132	↑	130,269	1,012	128.7	1,294,433	10,089	128
Copenhagen to Aalborg	131,192	↑	1,234	↑	106.3	↑	1,210,209	↓	10,961	↓	110	↓	125,517	1,055	119.0	1,054,097	9,084	116
Madrid to London - Heathrow	131,020	↑	788	↑	166.3	↑	1,286,479	↓	7,682	↓	167	↓	135,138	774	174.6	1,379,782	7,708	179
Frankfurt to Vienna	130,712	↑	912	↑	143.3	↑	1,221,034	↓	8,777	↓	139	↑	117,613	856	137.4	1,090,871	8,086	135
Frankfurt to Munich	129,764	↓	745	↑	174.2	↑	1,195,760	↓	6,806	↓	176	↓	138,690	745	186.2	1,323,515	6,840	193
London - Heathrow to Glasgow	128,762	↓	906	↑	142.1	↑	1,215,616	↓	8,450	↓	144	↑	125,846	886	142.0	1,253,983	8,764	143
Madrid to Tenerife North	128,902	↓	655	↑	196.8	↑	1,302,401	↓	6,720	↓	194	↑	145,547	780	186.6	1,401,171	7,527	186
Madrid to Valencia	127,943	↓	1,079	↓	118.6	↓	1,249,663	↓	10,264	↓	122	↓	160,035	1,243	128.7	1,428,573	11,728	122
Palma Mallorca to Dusseldorf	124,613	↑	557	↓	223.7	↓	978,082	↓	4,470	↓	219	↑	111,193	497	223.7	910,254	4,186	217
Dusseldorf to Berlin - Tegel	124,821	↓	904	↑	138.1	↓	1,216,805	↑	8,549	↑	142	↑	123,764	890	139.1	1,176,616	8,371	141
London - Heathrow to Rome - Fiumicino	123,771	↑	678	↑	182.6	↑	1,134,225	↑	6,342	↓	179	↑	107,914	596	181.1	1,106,788	6,320	175
Madrid to Bilbao	124,383	↓	829	↓	150.0	↓	1,145,667	↓	7,807	↓	147	↓	135,424	869	155.8	1,189,878	7,682	155
Madrid to Paris - Charles De Gaulle	123,146	↑	812	↑	151.7	↓	1,084,304	↓	7,376	↓	147	↓	104,137	735	141.7	1,093,453	7,687	142
Madrid to Paris - Orly	120,951	↓	759	↓	159.4	↓	1,172,990	↓	7,367	↓	159	↓	127,729	786	162.5	1,252,755	7,812	160
Bergen to Stavanger	120,452	↑	877	↑	137.3	↑	977,666	↑	7,154	↓	137	↑	108,681	857	126.8	913,691	7,289	125

This report is produced by RDC Aviation in partnership with Innovata and data is derived from the Innovata SRS database. The report shows frequency and capacity information for all carriers contained within the Innovata SRS database for operations within Europe.

RDC Aviation is a provider of software, consultancy, environmental emissions analysis and data to the international aviation industry. For additional information, assistance or further details about RDC Aviation and its products, please contact info@rdcaviation.com or visit www.rdcaviation.com

Innovata is a global leader in travel content management and distribution solutions and as a partner of IATA, maintains and markets SRS - one of the worlds largest flight databases - with over 900 participating airlines including over 100 Low Cost Carriers. Further information is available at www.innovata-llc.com

To add extra recipients to our distribution list, or to unsubscribe, please contact ian.robins@rdcaviation.com

The October 2010 edition of the European Capacity Report is brought to you in conjunction with



route analysis made easy

A unique online system that enables you to understand the economics of airline routes and unlock your network's potential

To apply for your demo or free trial call now on +44 (0) 115 959 8182 or email info@routepro.net



JetEx is a full service Flight Support company, providing flight planning and dispatch services, ground handling, fuel sales and regulatory permissions including slots and permits. Headquartered in Dubai, Jetex has strong relationships with vendors and government agencies worldwide, which is why we are the most trusted company in flight support.

jetex.aero

Handlers by Nature™

JETEX
FLIGHT SUPPORT